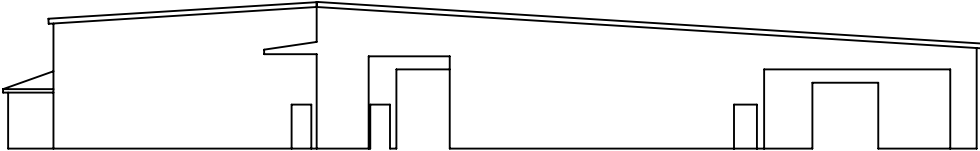
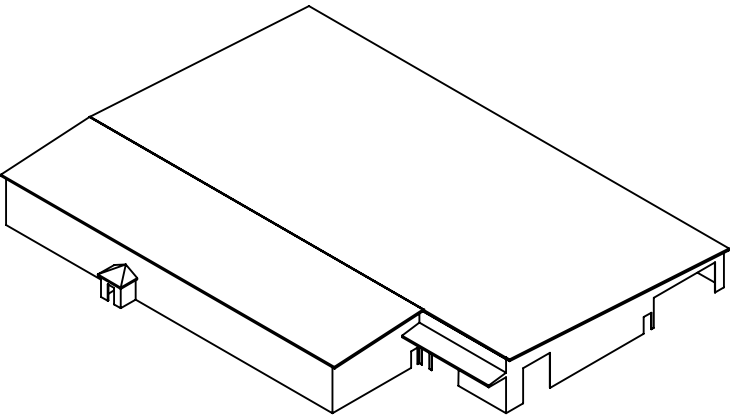
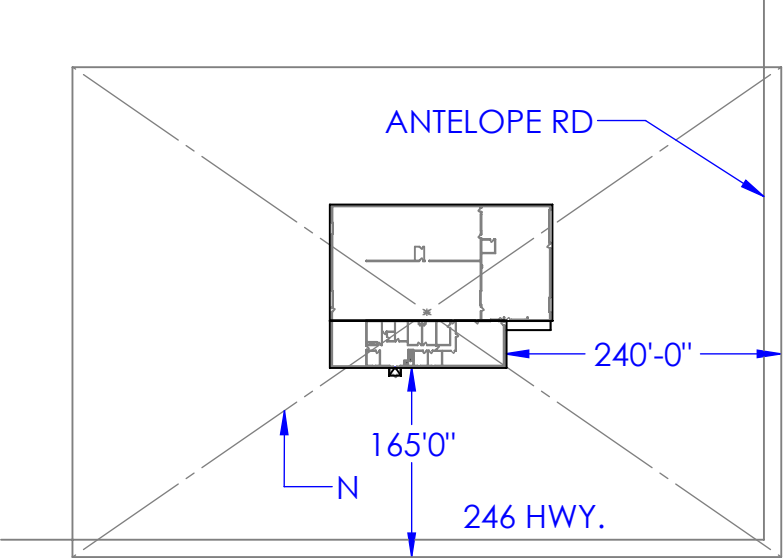
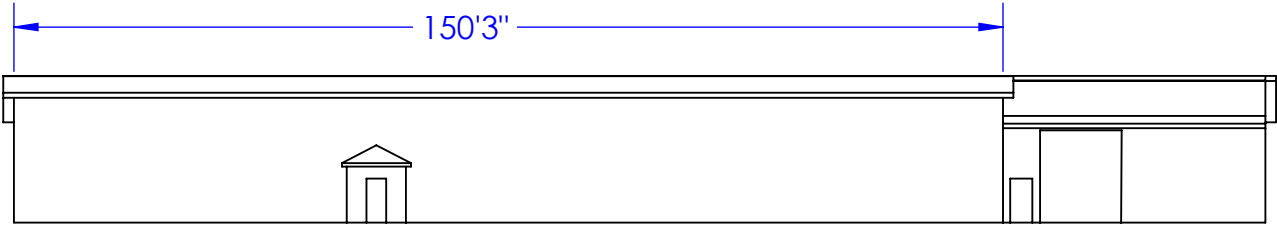
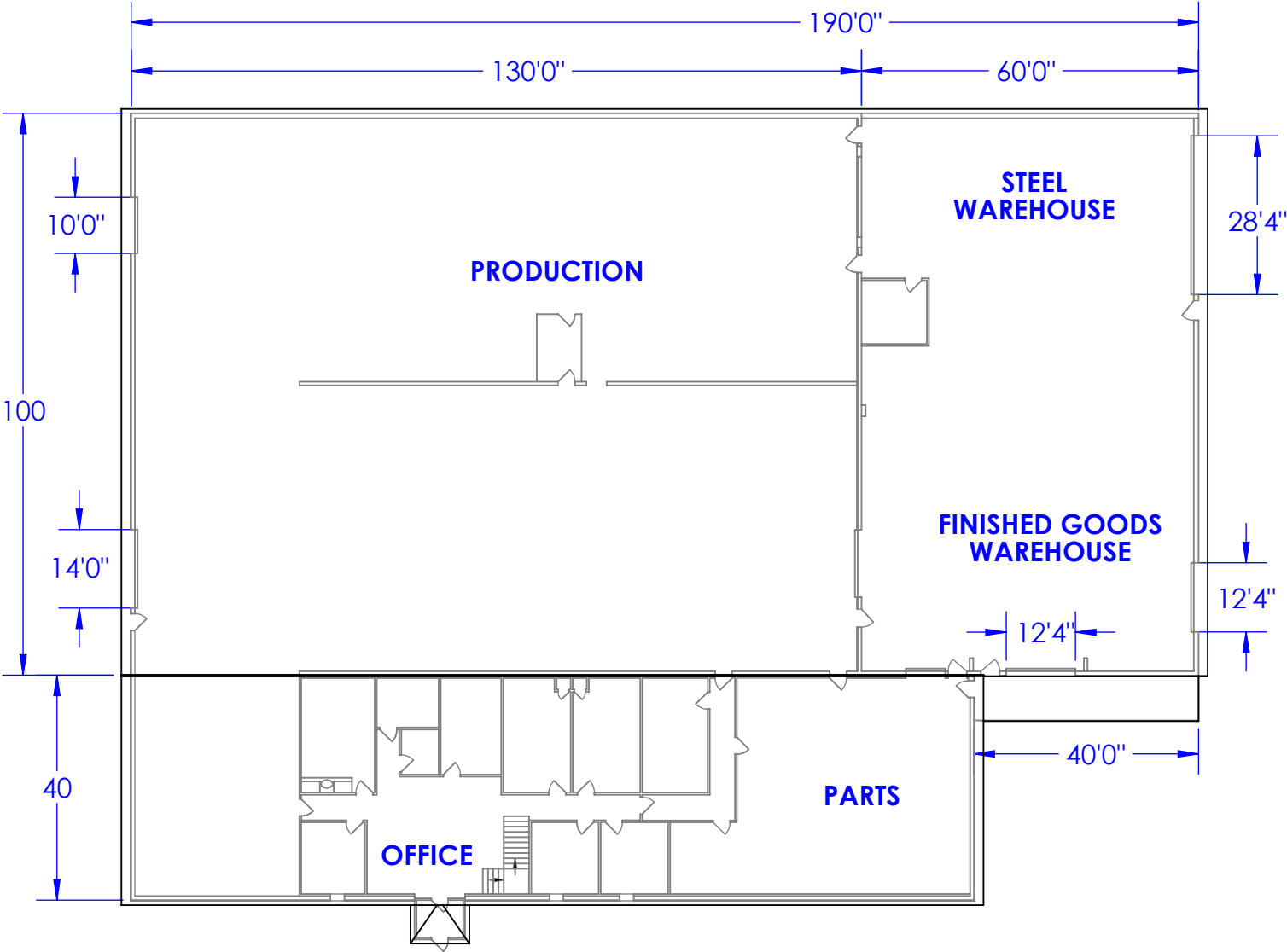


REV.	REVISIONS	DATE	APPROVED
	DESCRIPTION INITIAL RELEASE		
A		10/11/2012	



PROPRIETARY AND CONFIDENTIAL
THE INFORMATION CONTAINED IN THIS
DRAWING IS THE SOLE PROPERTY OF
<INSERT COMPANY NAME HERE>. ANY
REPRODUCTION IN PART OR AS A WHOLE
WITHOUT THE WRITTEN PERMISSION OF
<INSERT COMPANY NAME HERE> IS
PROHIBITED.

UNLESS OTHERWISE SPECIFIED:
DIMENSIONS ARE IN INCHES
TOLERANCES:
FRACTIONAL $\pm 1/16$
ANGULAR: MACH ± 1 BEND \pm
TWO PLACE DECIMAL ± 0.10
THREE PLACE DECIMAL ± 0.005
MATERIAL
DO NOT SCALE DRAWING

		NAME	DATE	P.O. BOX 248, SABETHA KS. 66534 (785) 284-3674 FAX (785) 284-3931		
DRAWN		HEATH	10/11/2012	<div>TRIPLE C</div> <div>INC.</div>		
PART #						
ASM #		Triple C Shell				
COMMENTS:				SIZE	DWG. NO.	REV
TRIPLE C FACILITY SHELL				B	95-1406	A
				SCALE: 1:350		WEIGHT: